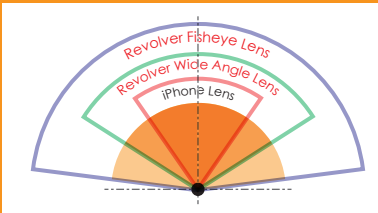


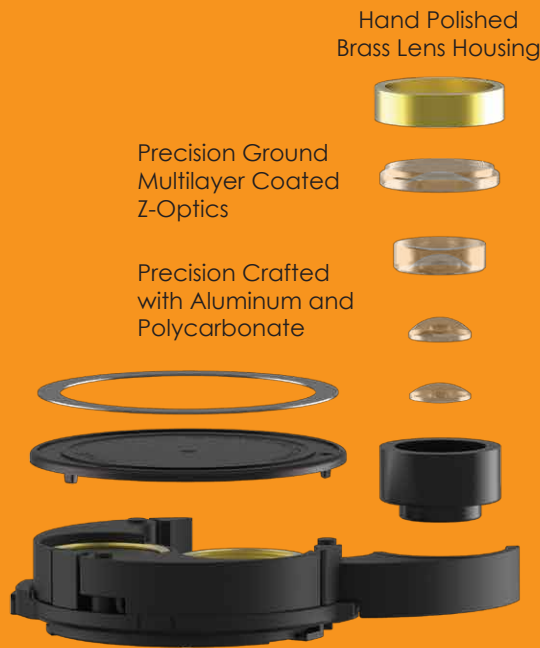
NEWLY DEVELOPED

RV-3

4-IN-1 LENS KIT



Extend the range of your iPhone's built in camera. With our 4 in 1 Revolver Lens, you can choose the lens that suits your needs.



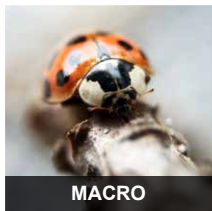
Smartphone Case Crafted with Alloy and Polycarbonate



FISHEYE



WIDE ANGLE



MACRO



CPL FILTER

HOW TO INSTALL THE PHONE INTO THE CASE



Remove top of the case



Install the phone



Ready to use

HOW TO USE REVOLVER LENS



LOCK MODE

The lock position prevents the lenses from being released.



LENS MODE

Rotating the Revolver to the open position allows the lenses to be released.

FL - FISHEYE LENS

The Fisheye Lens captures approximately a 180° field-of-view and produces some striking images.



1. Rotate the Revolver to align "FL" with the white dot.



2. Flip out the lens.



3. With the lens flipped out, the fisheye lens can be used.

W/M - WIDE ANGLE LENS/MACRO

The **wide angle lens** is great for when you need that extra field of view, approximately double that of the normal iPhone. The **10x macro lens** is great for close up pictures and has an approx. 18mm focus distance.



1. Rotate the Revolver to align "W/M" with the white dot.



2. Flip out the lens. Wide angle and macro lenses are stacked on top of one another using a magnetic ring.



3. With the lens flipped out, the wide angle lens can be used.



4. Remove the wide angle lens to access the macro lens.

CPL - CIRCULAR POLARIZER

Remove unwanted reflections from non-metallic surfaces. Enable colors to become more saturated with better contrast.



1. Rotate the Revolver to align "CPL" with the white dot.



2. Flip out the lens.

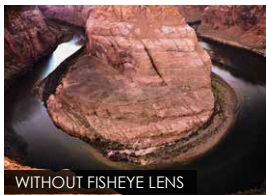


3. With the lens flipped out, the CPL filter can be used. **Tip:** Rotate the CPL lens to cut glare and improve saturation

HOW TO USE ZTYLUS CASE

FISHEYE LENS

The Fisheye Lens captures approximately a 180° field-of-view and produces some striking images.



WITHOUT FISHEYE LENS



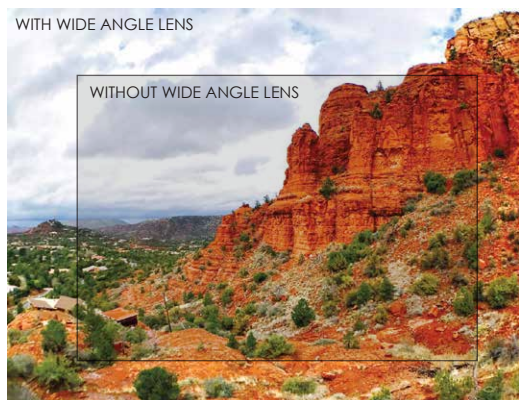
WITH FISHEYE LENS

WIDE ANGLE LENS

The Wide-Angle Lens is great for when you need that extra field of view, approximately double that of the normal iPhone



WITH WIDE ANGLE LENS



WITHOUT WIDE ANGLE LENS

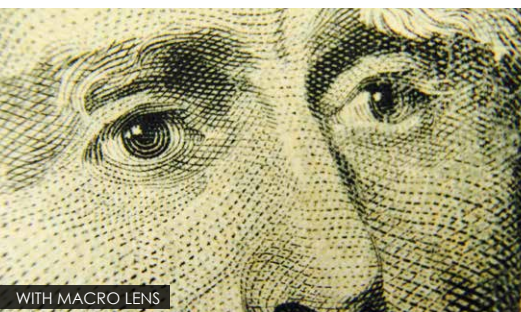
MACRO LENS

Choose the lens based on the level of detail you're looking for. The 10x Macro Lens has an approx. 18mm focusing distance.



WITHOUT MACRO LENS

Tip: Remove the wide angle lens to access the macro lens. Focus distance is 18mm.



WITH MACRO LENS

CPL

A circular polarizer filter cuts glare and reflections, allowing deep, natural colors to show through with great saturation. This effect is most noticed in blue skies where white clouds will pop from the darkened blue skies.



Tip: Rotate the CPL lens to cut glare and improve saturation



WITHOUT CPL FILTER



WITH CPL FILTER

NOTICE THE DIFFERENCE
CPL Filter cuts the glare & reflection from the window.



HOW TO REMOVE THE REVOLVER LENS



1 Push the button with the red dot



2 Turn the Revolver Lens counterclockwise



3 Remove the Revolver Lens

HOW TO INSTALL THE KICKSTAND DISC



1 Align the dots on the case and disc



2 Flip the kickstand up for easy installation



3 Turn the disc clockwise to install

OTHER COMPATIBLE ATTACHMENTS

*Other attachments are sold separately



Vent Clip Disc



GoMount Disc



LED Ring Light

PATENTS GRANTED & PENDING:

ZL201430225244.0 / ZL201420074391.7

ZL201320702259.1 / ZL201420285989.0 / US20150192757A1

Designed in USA, Made in China
For more info, visit www.ztylus.com